



SPECIALIST  
PROFESSIONAL  
INDEMNITY  
INSURANCE

# Thomas Miller Connect user guide

ITIC  
IS MANAGED  
BY **THOMAS  
MILLER**

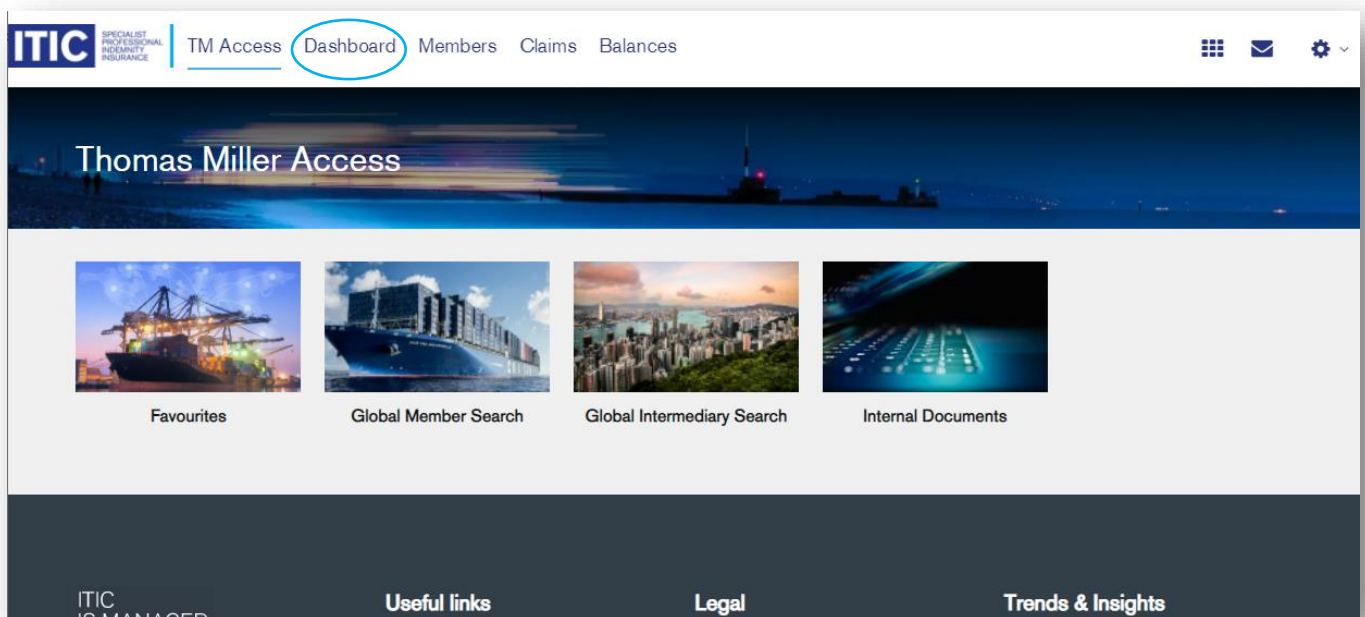


## Welcome to Thomas Miller Connect:

Thomas Miller Connect is the brand new online portal that allows you 24/7 access to premium balances and full claims data and can be accessed via [connect.thomasmiller.com/itic/main/](https://connect.thomasmiller.com/itic/main/)

## Log on screen:

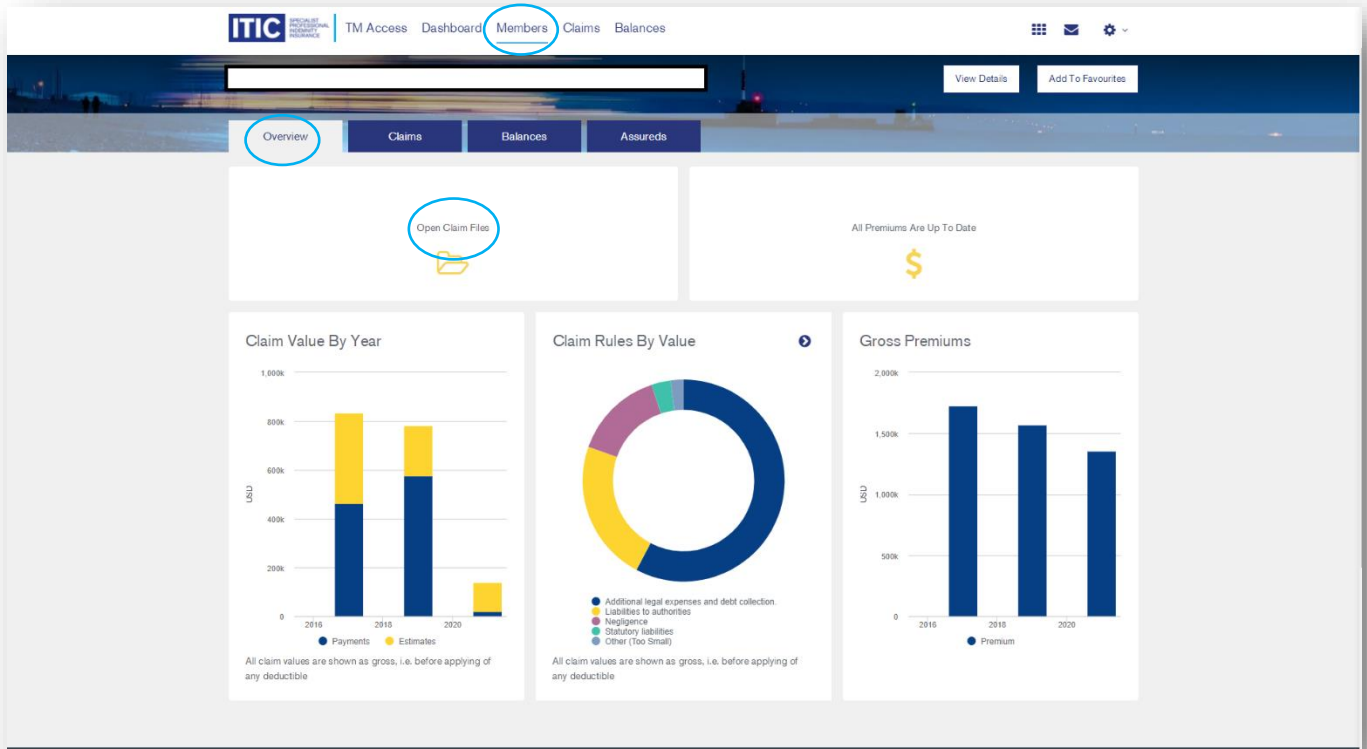
Once you have logged into Thomas Miller Connect you will be introduced to the following screen:



- As a member when you click on [Dashboard](#) you will go to your [Members / Overview](#) and can then click on your company name.

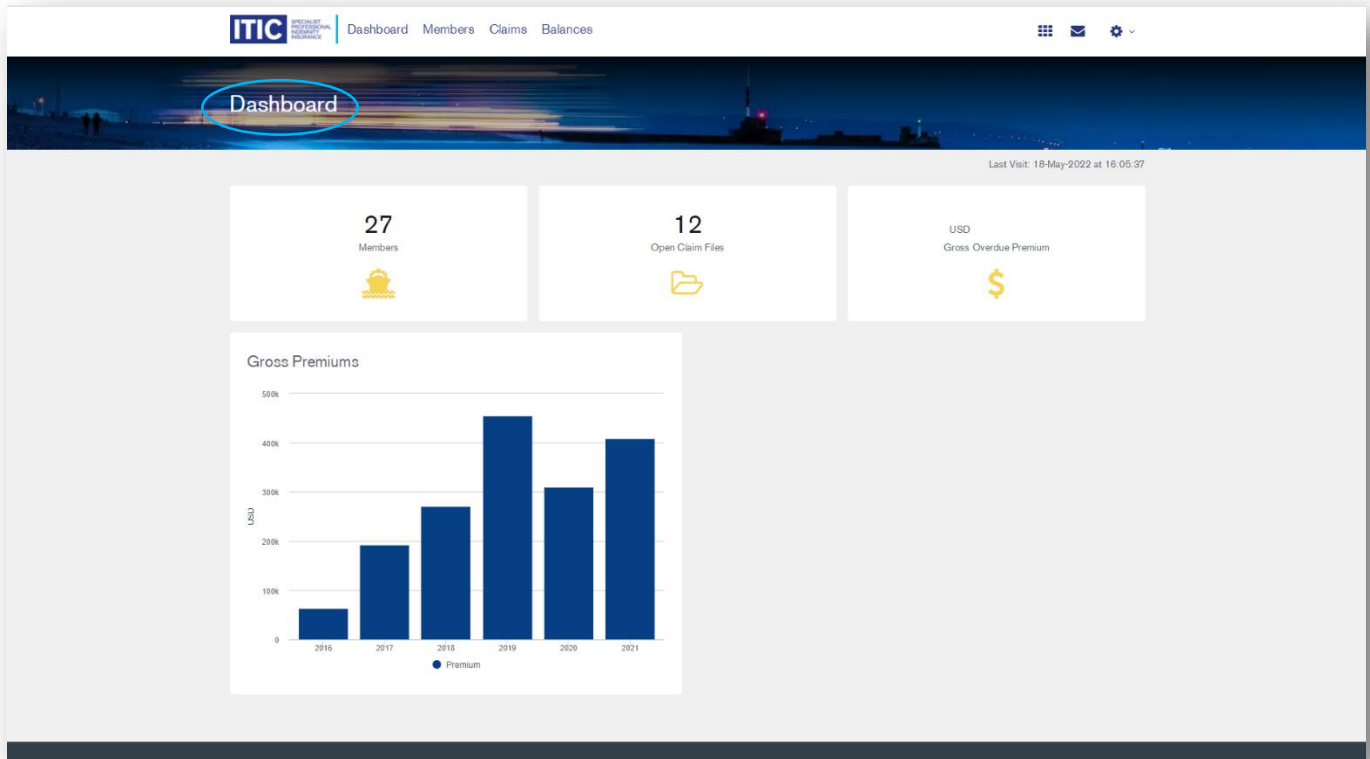


## Members overview:



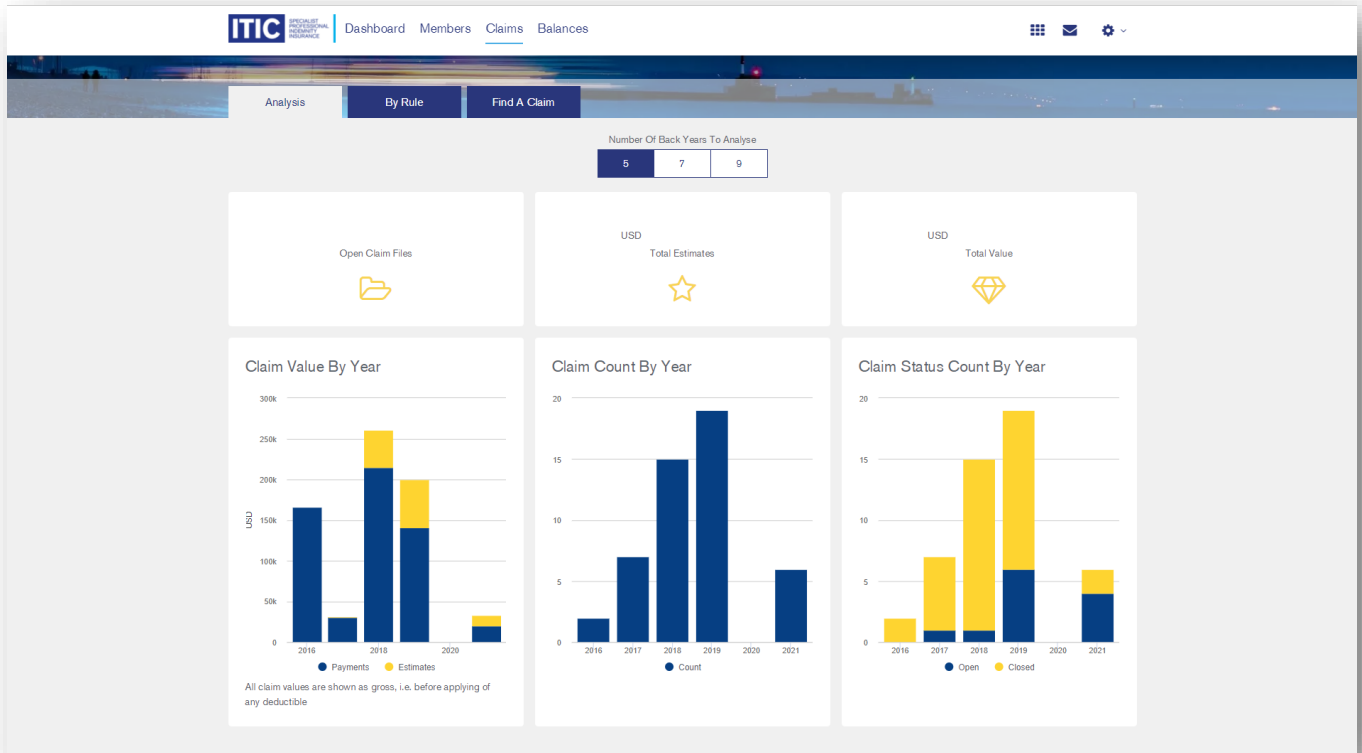
- Once into the [Members / Overview](#) you will see this view which gives you a summary of claims and premiums which you can click on and obtain additional information.
- If you click on the [Open Claims Files](#) link you will go to a list of all claims (active and inactive).
- All data can be exported and saved to Microsoft Excel.

## Insurance broker overview:



- As an insurance broker when you click on the [Dashboard](#) you will see this view.
- You can then click through and see all of your ITIC members and expand any of them to get the full [Member / Overview](#).

## Claims section:



- Here you will be able to view all claims currently notified to ITIC (open and closed) and the associated costs.

If you have any questions, or require additional support, please contact [itic.news@thomasmiller.com](mailto:itic.news@thomasmiller.com)